



Headquarters:
Datavägen 21B
SE-436 32 Askim, SWEDEN
info@satlabgps.com | www.satlabgps.com

Regional Offices:
Jičín, CZECH REPUBLIC
Ankara, TURKEY
Scottsdale, USA
Singapore, SINGAPORE
Warsaw, POLAND



www.satlab.com



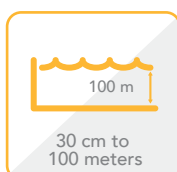
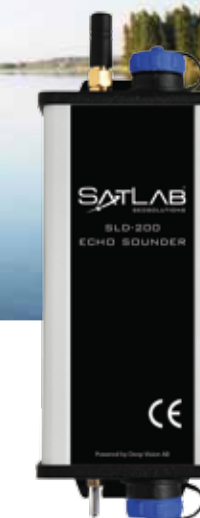
SLD-100 Echo Sounder



www.satlabgps.com

SLD-100 Echo Sounder

Portable Depth Sounding System for
Connection to GNSS Systems



SatLab SLD-100 is a compact survey grade depth sounder with operational depth ranging from 30 cm to 100 meters. It provides standard depth string streams in \$SDDPT, \$SDDBT and \$YXMTW at 1Hz, 4800 bps which makes the SLD-100 compatible with any Hydrographic Surveying Software package.

SLD-100 is independently powered by an internal lithium battery which provides more than 10 hours of continuous operation.

SLD-100 is extremely easy to use simply requiring the unit to be powered on to commence operation. Position and depth data is logged to any external logging device running compatible software.



Mounting accessories for the SLD-100 and transducer are included in the package making it simple to mount the sounder and to attach a RTK GNSS receiver.

SLD-100 housing is environmentally sealed to a rating of IP67 making it operational in the most challenging environments.



Mechanical Specification

Measurements (WxHxL)	: 60 mm x 34 mm x 165 mm
Environmental	: Classification IP67
External Power	: Connector Mini USB
Indicator LEDs	: Green: USB Power source connected, Battery charging Blue: Device turned on



Sonar Transducer Specification

	Option 1	Option 2
Beamwidth	: 11°	9°
Depth Range	: 0.3 m to 100 m	0.4 m to 100 m
Resolution in Depth	: 0.10 m	0.01 m
Ping Frequency	: 200 kHz	200 kHz
Data Output Rate	: 1 Hz	1 Hz



Electrical Specification

Input Voltage	: 5 V (standard USB)
Battery Time	: ~10 h
Operating Current (Average)	: 300 mA
Battery Capacity	: 5200 mAh
Max Charge Current (internally limited)	: 500 mA
Battery Current While in Off State	: 1 mA



Serial Interface Specification

Serial Interfaces	: BlueTooth, Mini USB
Data Format (both USB and BlueTooth)	: 4800 baud, 8 bits, 1 stop bit, no parity. NMEA 0183 Standard